



Allgemeine Hinweise

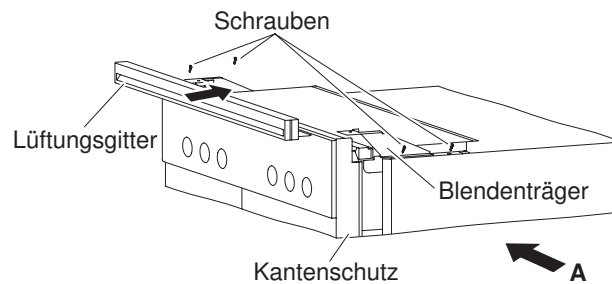
Siehe Installationsanleitungen für Glaskeramik-Kochfelder.

Bausätze Lüftungsgitter

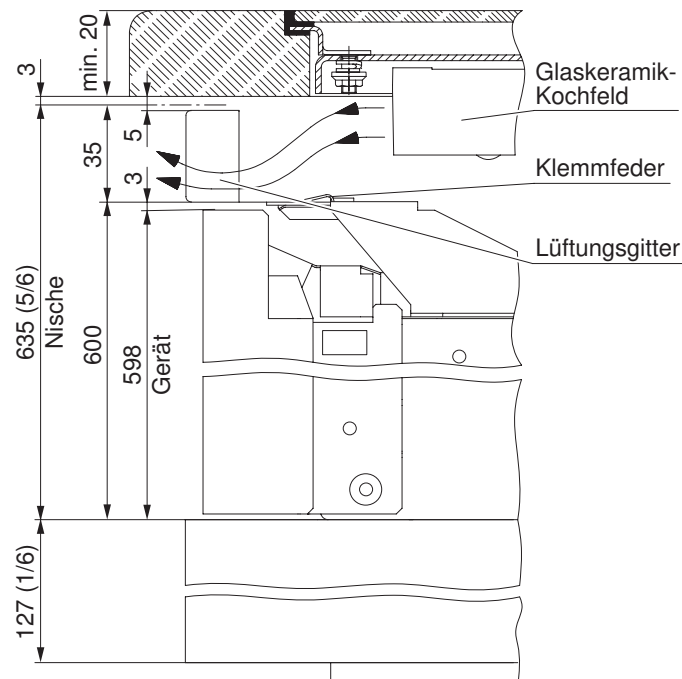
Art.-Nr.	Farbe	Bauform	Erforderliche Nischengrösse	Geräteabmessung
H6.3160	Weiss	55-600	B x H = 55 x 63,5 cm	B x H = 54,8 x 59,8 cm
H6.3162	Nero			
H6.3164	ChromeClass			
H6.3255	ChromeClass (TouchClean)			
H6.3161	Weiss	60-600	B x H = 60 x 63,5 cm	B x H = 59,6 x 59,8 cm
H6.3163	Nero			
H6.3165	ChromeClass			
H6.3256	ChromeClass (TouchClean)			

Installation

- Blendenträger links/rechts mit je 2 Schrauben mit Deckblech vorne verschrauben.
- Lüftungsgitter vorsichtig bis zum Anschlag einschieben und mit Klemmfeder befestigen.



Ansicht A
Backofen 55-600, 60-600



Indications générales

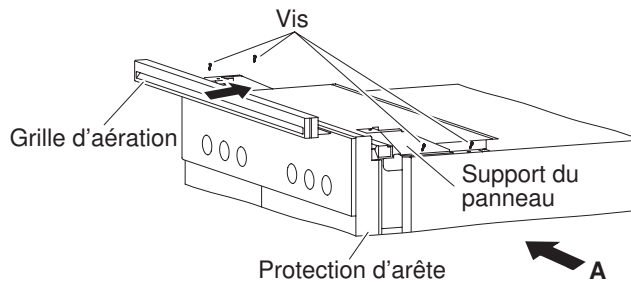
Voir notice d'installation pour champ de cuisson en vitrocéramique.

Sets de grille d'aération

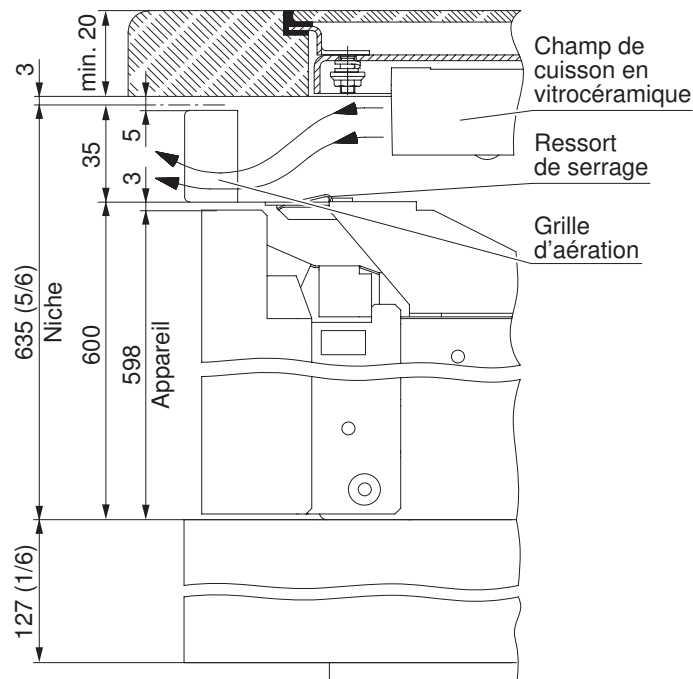
No d'article	Couleur	Type de construction	Dimension nécessaire de la niche	Dimension de l'appareil
H6.3160	Blanc	55-600	L x H = 55 x 63,5 cm	L x H = 54,8 x 59,8 cm
H6.3162	Nero			
H6.3164	ChromeClass			
H6.3255	ChromeClass (TouchClean)			
H6.3161	Blanc	60-600	L x H = 60 x 63,5 cm	L x H = 59,6 x 59,8 cm
H6.3163	Nero			
H6.3165	ChromeClass			
H6.3256	ChromeClass (TouchClean)			

Installation

- Visser le support du panneau gauche/droite vissé avec 2 vis (de chaque côté) à la tôle de recouvrement devant.
- Pousser prudemment la grille d'aération jusqu'en butée et fixer par le ressort de serrage.



Vue A
Four 55-600, 60-600



Indicazioni generali

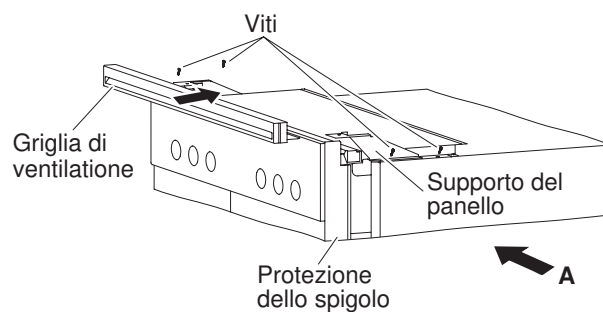
Vedere istruzioni d'installazione per piano di cottura vetroceramica.

Kit di montaggio per la griglia di ventilazione

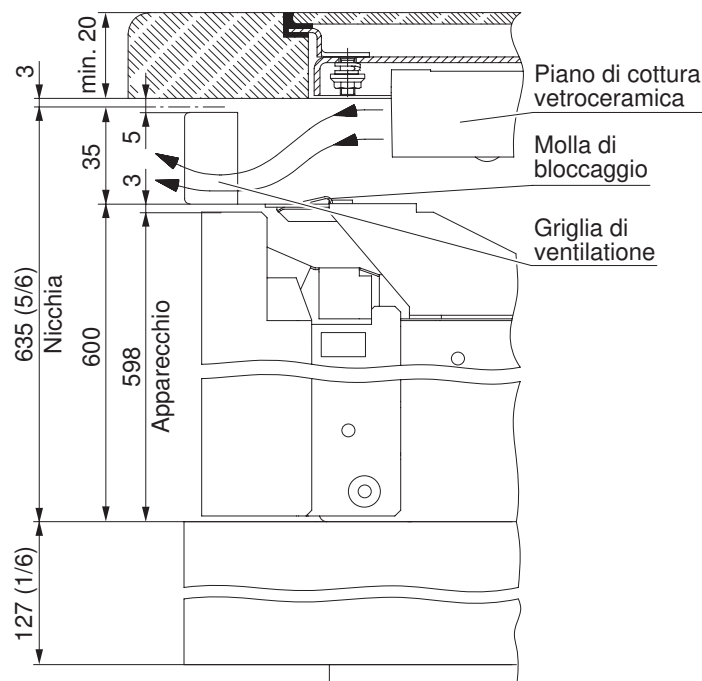
Art. n.	Colore	Forma costruttiva	Dimensione della nicchia richieste	Dimensione dell'apparecchio
H6.3160	Bianco	55-600	L x A = 55 x 63,5 cm	L x A = 54,8 x 59,8 cm
H6.3162	Nero			
H6.3165	ChromeClass			
H6.3255	ChromeClass (TouchClean)	60-600	L x A = 60 x 63,5 cm	L x A = 59,6 x 59,8 cm
H6.3161	Bianco			
H6.3163	Nero			
H6.3165	ChromeClass			
H6.3256	ChromeClass (TouchClean)			

Installazione

- Avvitare il supporto del pannello con 2 viti a sinistra e 2 a destra alla lamiera di copertura davanti.
- Infilare con cautela la griglia di ventilazione fino all battuta d'arresto e fissare con molla di bloccaggio.



Veduta A
Forno 55-600, 60-600



General information

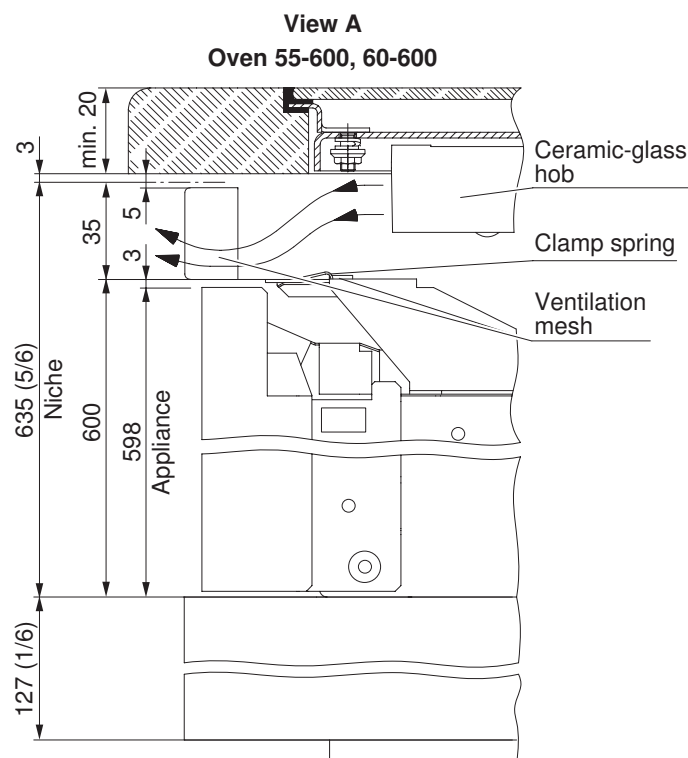
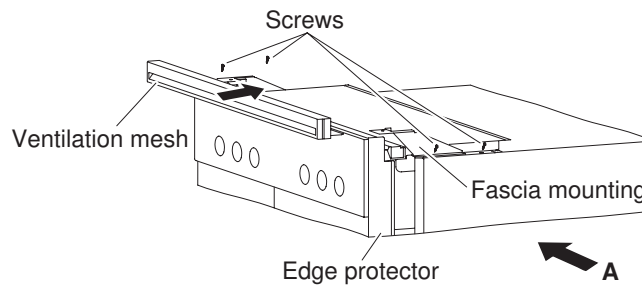
See installation instructions for ceramic-glass hobs.

Mounting sets for ventilation meshes

Art. no.	Colour	Type of construction	Required niche size	Appliance dimensions
H6.3160	White	55-600	B x H = 55 x 63.5 cm	B x H = 54.8 x 59.8 cm
H6.3162	Nero			
H6.3164	ChromeClass			
H6.3255	ChromeClass (TouchClean)			
H6.3161	White	60-600	B x H = 60 x 63.5 cm	B x H = 59,6 x 59.8 cm
H6.3163	Nero			
H6.3165	ChromeClass			
H6.3256	ChromeClass (TouchClean)			

Installation

- Mount the fascia mountings left and right with 2 screws to the cover plate in front.
- Carefully insert ventilation mesh as far as the stop and fix with the clamp spring.



Indicaciones generales

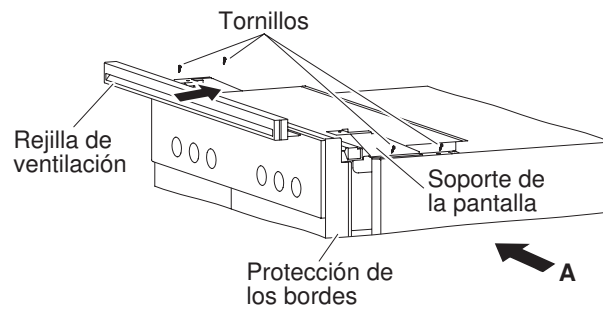
Ver las instrucciones de instalación para placas vitrocerámicas.

Kits de rejilla de ventilación

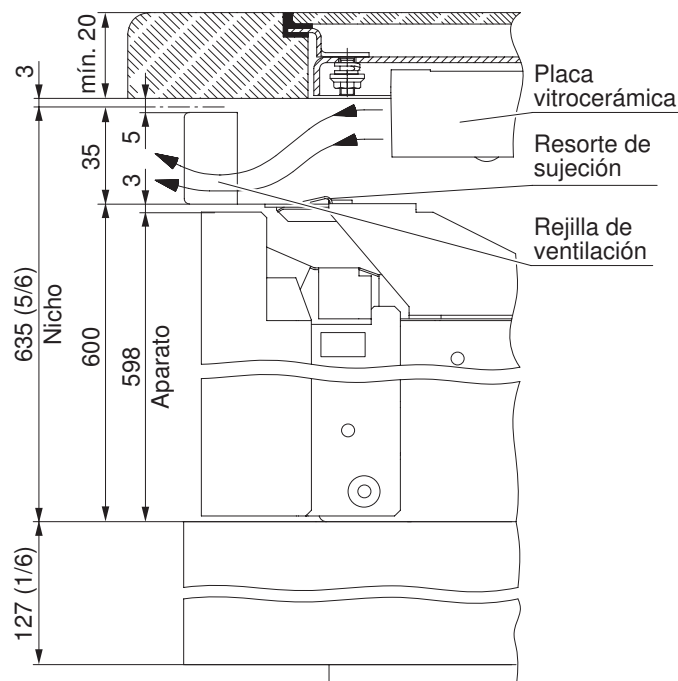
Núm. de artículo	Color	Modelo	Tamaño de nicho necesario	Dimensiones del aparato
H6.3160	Blanco	55-600	A x H = 55 x 63,5 cm	A x H = 54,8 x 59,8 cm
H6.3162	Nero			
H6.3164	ChromeClass			
H6.3255	ChromeClass (TouchClean)			
H6.3161	Blanco	60-600	A x H = 60 x 63,5 cm	A x H = 59,6 x 59,8 cm
H6.3163	Nero			
H6.3165	ChromeClass			
H6.3256	ChromeClass (TouchClean)			

Instalación

- Atornille el soporte de la pantalla a izquierda/derecha con 2 tornillos a tapadera delante.
- Introduzca cuidadosamente la rejilla de ventilación hasta el tope en sujeción con resorte de sujeción.



Vista A
Horno 55-600, 60-600



Notas gerais

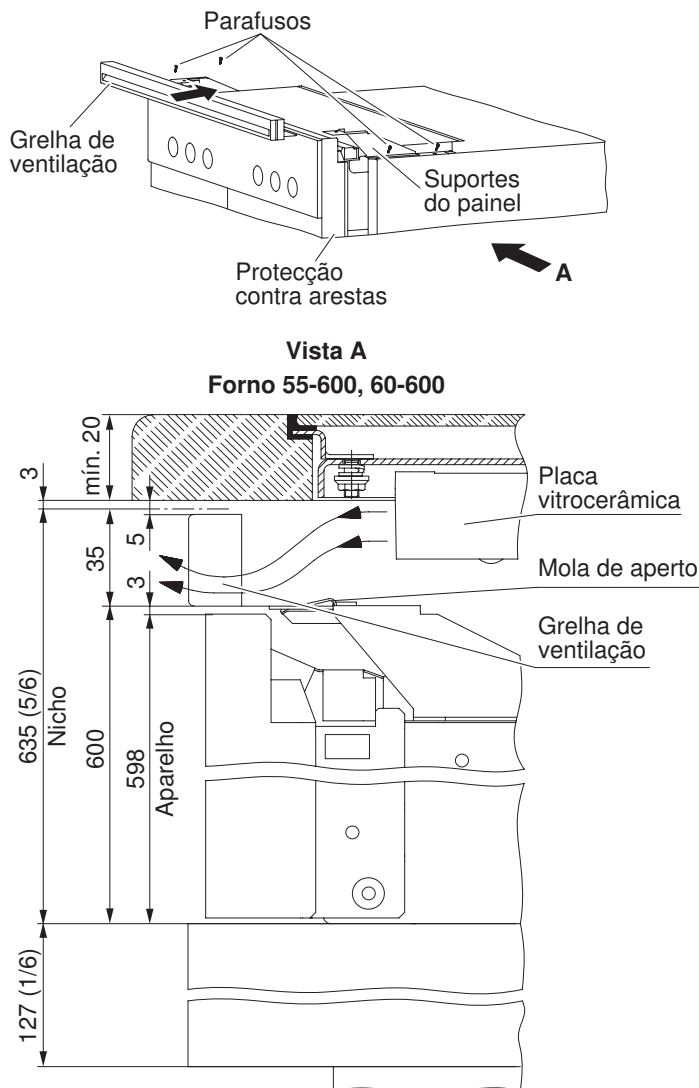
Consulte o manual de instalação para placas vitrocerâmicas.

Conjuntos de grelhas de ventilação

Núm. de artigo	Cor	Modelo	Dimensões necessárias do nicho	Dimensões do aparelho
H6.3160	Branco	55-600	L x A = 55 x 63,5 cm	L x A = 54,8 x 59,8 cm
H6.3162	Nero			
H6.3164	ChromeClass			
H6.3255	ChromeClass (TouchClean)			
H6.3161	Branco	60-600	L x A = 60 x 63,5 cm	L x A = 59,6 x 59,8 cm
H6.3163	Nero			
H6.3165	ChromeClass			
H6.3256	ChromeClass (TouchClean)			

Instalação

- Aparafusar os suportes do painel no lado esquerdo/direito com 2 parafusos, respectivamente, à placa de tampa frente.
- Empurrar a grelha de ventilação cuidadosamente até ao batente e fixar com mola de aperto.



Algemene aanwijzingen

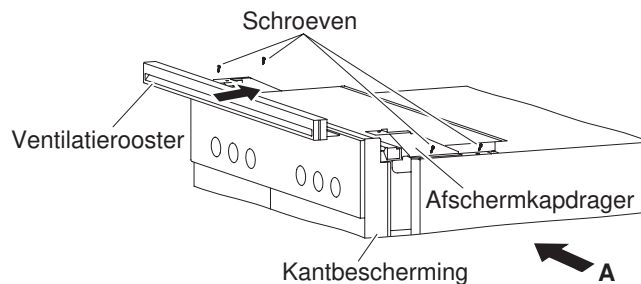
Zie installatiehandleidingen voor glaskeramische kookvelden.

Bouwpakketten ventilatieroosters

Artikelnr.	Kleur	Uitvoering	Vereiste nisgrootte	Afmetingen van het toestel
H6.3160	Wit	55-600	B x H = 55 x 63,5 cm	B x H = 54,8 x 59,8 cm
H6.3162	Nero			
H6.3164	ChromeClass			
H6.3255	ChromeClass (TouchClean)			
H6.3161	Wit	60-600	B x H = 60 x 63,5 cm	B x H = 59,6 x 59,8 cm
H6.3163	Nero			
H6.3165	ChromeClass			
H6.3256	ChromeClass (TouchClean)			

Installatie

- Schroef de afschermkapdrager links/rechts met elk 2 schroeven aan de schermplaat vooraan.
- Schuif het ventilatierooster voorzichtig tot de aanslag naar binnen en bevestig met klemveer.



Aanzicht A
Bakoven 55-600, 60-600

